

# Hopping Brook Park

## 58 Hopping Brook Road | Holliston, Massachusetts

**FOR LEASE**



### 12,040 SF Single Story Flex Building

58 Hopping Brook Road is located in a high-quality park with extensive landscaping, underground utilities and easy access to Route 495 and Route 109 in Milford. Ideal setting for a corporate headquarters location in the heart of Metrowest.

- 12,040 SF Available
- Free Span Warehouse
- 4.63 Acres
- Q1 2023 Completion
- 22' Clear Height
- Tailboard and Drive-in Loading

For more information please contact:

John Eysenbach 508-651-9017, [johne@rwholmes.com](mailto:johne@rwholmes.com)

**RW. HOLMES**  
COMMERCIAL REAL ESTATE

321 Commonwealth Road, Suite 202, Wayland, MA. 01778 | Phone (508) 655-5626 [www.rwholmes.com](http://www.rwholmes.com)

All information furnished regarding property for sale, rental or financing is from sources deemed reliable. No representation is made as to the accuracy thereof and is submitted subject to errors, omissions, change of price, rental or other conditions, prior sale, lease or financing, or withdrawal without notice.

# Hopping Brook Park

## 58 Hopping Brook Road | Holliston, Massachusetts

### SPECIFICATIONS:

**Location:** In the Hopping Brook Industrial Park on (Rt. 16) in Holliston, MA. Ten miles south of Massachusetts Turnpike; two miles east of Rt. 495/109 exit.

**Space Available:** 12,040 SF – Q1 2023

**Building Type:** Free Span Warehouse

**Year Built:** 2023

**Land Area:** 4.63 acres

**Loading:** Tailboard and Drive-in Loading

**Sprinklers:** Wet System Throughout

**Utilities:** Town water, natural gas, electric, private septic

For more information please contact:

John Eysenbach 508-651-9017, [johne@rwholmes.com](mailto:johne@rwholmes.com)



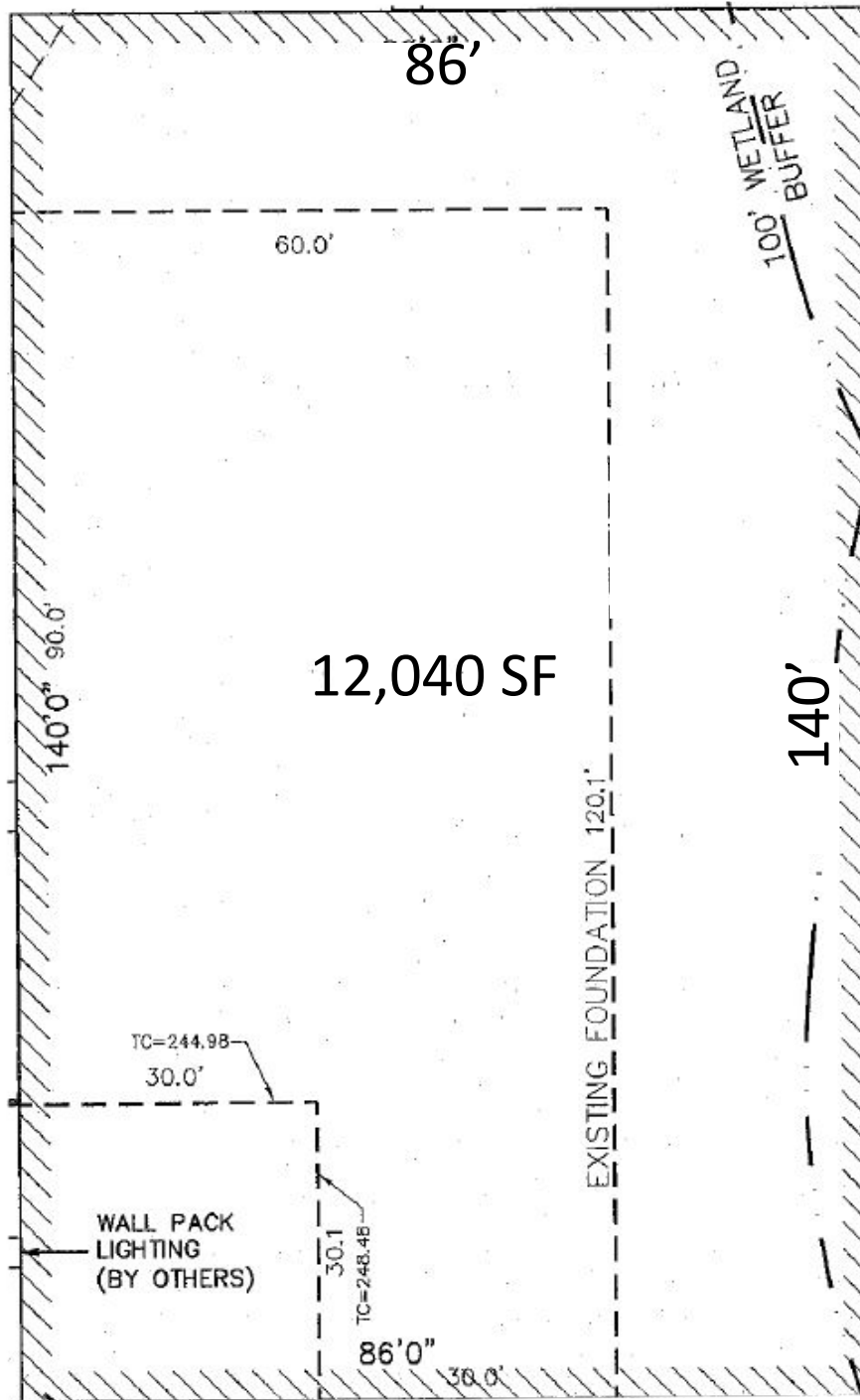
321 Commonwealth Road, Suite 202, Wayland, MA. 01778 | Phone (508) 655-5626 [www.rwholmes.com](http://www.rwholmes.com)

All information furnished regarding property for sale, rental or financing is from sources deemed reliable. No representation is made as to the accuracy thereof and is submitted subject to errors, omissions, change of price, rental or other conditions, prior sale, lease or financing, or withdrawal without notice.

# Hopping Brook Park

## 58 Hopping Brook Road | Holliston, Massachusetts

**FLOOR PLAN:**  
**12,040 SF Total**



For more information please contact:

John Eysenbach 508-651-9017, [john@rwholmes.com](mailto:john@rwholmes.com)

**R.W. HOLMES**  
COMMERCIAL REAL ESTATE

321 Commonwealth Road, Suite 202, Wayland, MA. 01778 | Phone (508) 655-5626 [www.rwholmes.com](http://www.rwholmes.com)

All information furnished regarding property for sale, rental or financing is from sources deemed reliable. No representation is made as to the accuracy thereof and is submitted subject to errors, omissions, change of price, rental or other conditions, prior sale, lease or financing, or withdrawal without notice.