

David Nassif Office Park | FOR LEASE



R.W. HOLMES
COMMERCIAL REAL ESTATE

195 WORCESTER ST
WELLESLEY | MA

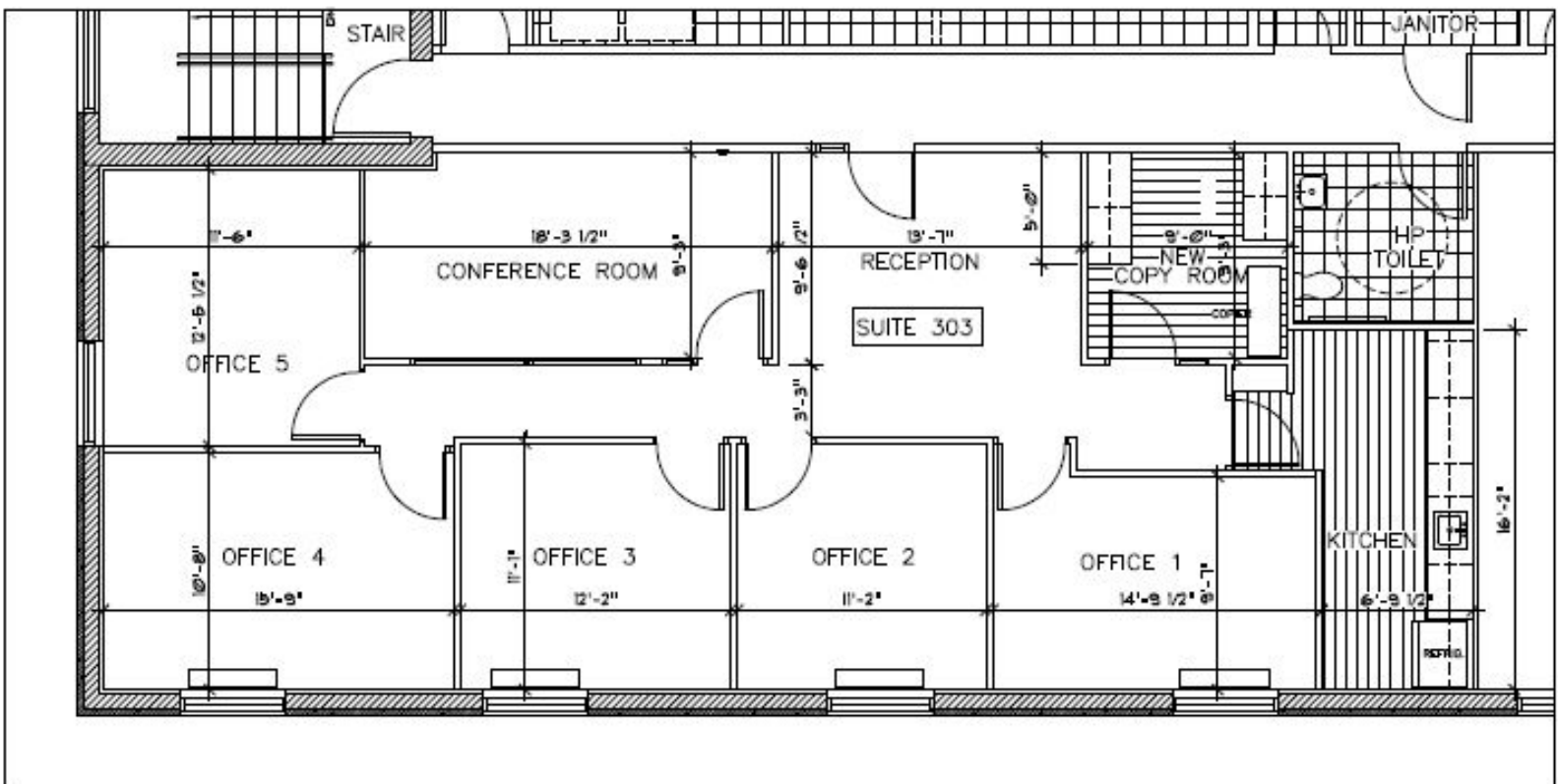
Arthur Amadei | 508-651-9018 | aamadei@rwholmes.com

David Nassif Office Park

195 Worcester Street | Wellesley, Massachusetts

FLOOR PLAN

1,879 SF



Located within the David Nassif Office Park off Rt 128 (2 miles from Mass Pike) with 1,879 SF of office/office medical space for lease. Corporate tenants include Partners Health Care, BBI, BioBridges and many more. Great opportunity for a corporate location that provides First-Class space with First-Class tenant services. Be one of many that have called The David Nassif Office Park their home for over 20 years.

For more information please contact:

Arthur Amadei | 508-651-9018 | aamadei@rwholmes.com

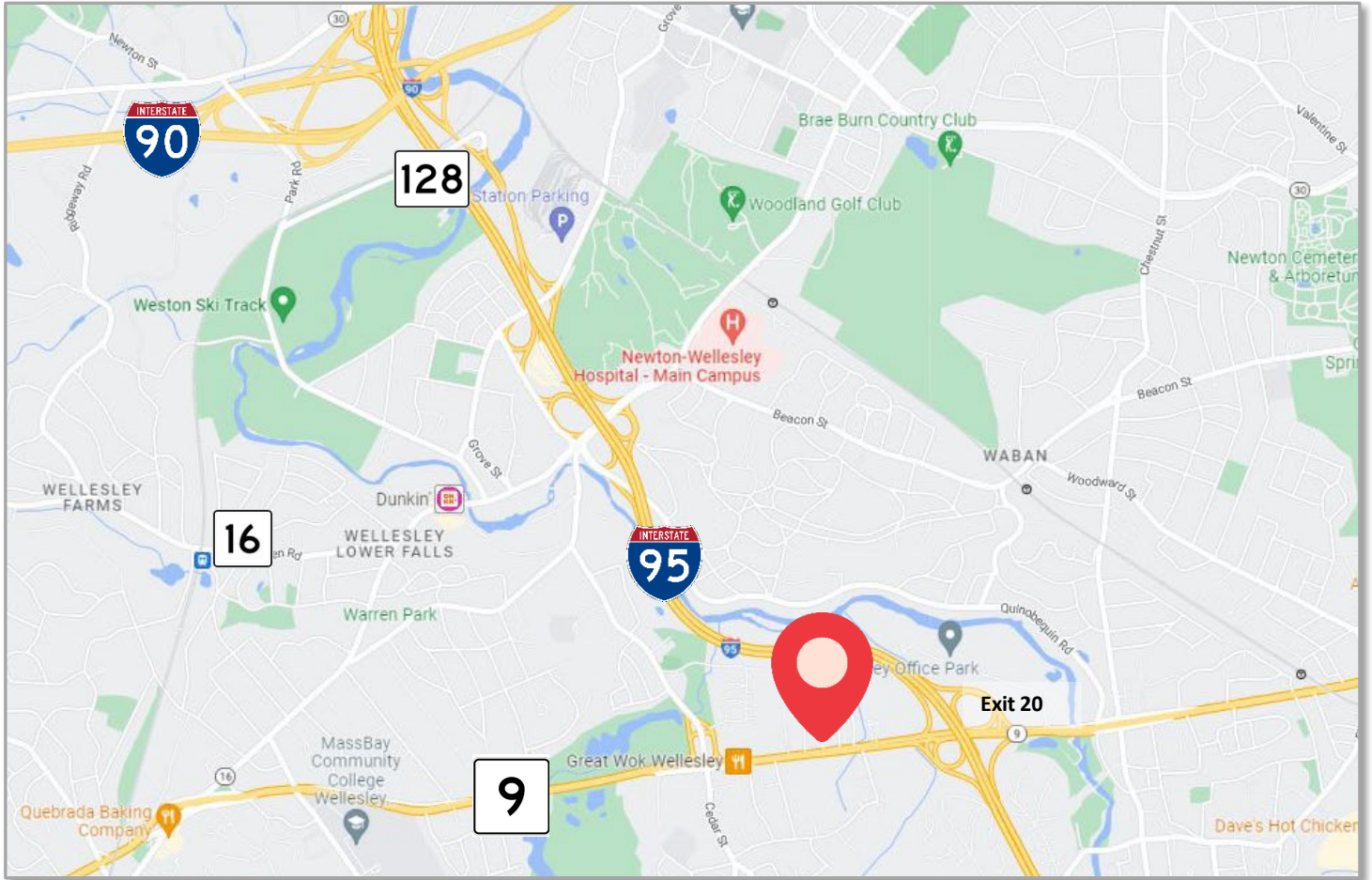
R.W. HOLMES
COMMERCIAL REAL ESTATE

321 Commonwealth Road, Suite 202, Wayland, MA. 01778 | Phone (508) 655-5626 www.rwholmes.com

All information furnished regarding property for sale, rental or financing is from sources deemed reliable. No representation is made as to the accuracy thereof and is submitted subject to errors, omissions, change of price, rental or other conditions, prior sale, lease or financing, or withdrawal without notice.

David Nassif Office Park

195 Worcester Street | Wellesley, Massachusetts



For more information please contact:

Arthur Amadei | 508-651-9018 | aamadei@rwholmes.com

R.W. HOLMES
COMMERCIAL REAL ESTATE

321 Commonwealth Road, Suite 202, Wayland, MA. 01778 | Phone (508) 655-5626 www.rwholmes.com

All information furnished regarding property for sale, rental or financing is from sources deemed reliable. No representation is made as to the accuracy thereof and is submitted subject to errors, omissions, change of price, rental or other conditions, prior sale, lease or financing, or withdrawal without notice.