

189 Boston Post Road East (Rt 20) | Marlborough, MA

FOR SALE



189 Boston Post Road East Offers High Visibility and Signage

- Building SF: 9,042 SF plus 1,050 SF Mezzanine and Basement Storage
- Zoning: RB - Roadside Business with a portion in the rear as Single Residence
- Ideal for a Restaurant, Retail, Medical, Office, or Multifamily Redevelopment
- Located in the new Wayside District Overlay which offers more flexible zoning

Offering Price: \$2,300,000

For more information please contact:

Craig Johnston | 508-651-9022 | cjohnston@rwholmes.com

Garry Holmes | 508-651-9020 | gholmes@rwholmes.com

Jim Bartholomew | 508-651-9023 | jimb@rwholmes.com

R.W. HOLMES
COMMERCIAL REAL ESTATE

321 Commonwealth Road, Suite 202, Wayland, MA 01778 | Phone (508) 655-5626 www.rwholmes.com

All information furnished regarding property for sale, rental or financing is from sources deemed reliable. No representation is made as to the accuracy thereof and is submitted subject to errors, omissions, change of price, rental or other conditions, prior sale, lease or financing, or withdrawal without notice.

189 Boston Post Road East (Rt 20) | Marlborough, MA

Site Plan



- 2.23-acre lot
- City Water & Sewer
- Renovated in 2010
- 168 Parking Spaces
- Real Estate Taxes: \$29,351
- Offering Price: \$2,300,000

For more information please contact:

Craig Johnston | 508-651-9022 | cjohnston@rwholmes.com

Garry Holmes | 508-651-9020 | gholmes@rwholmes.com

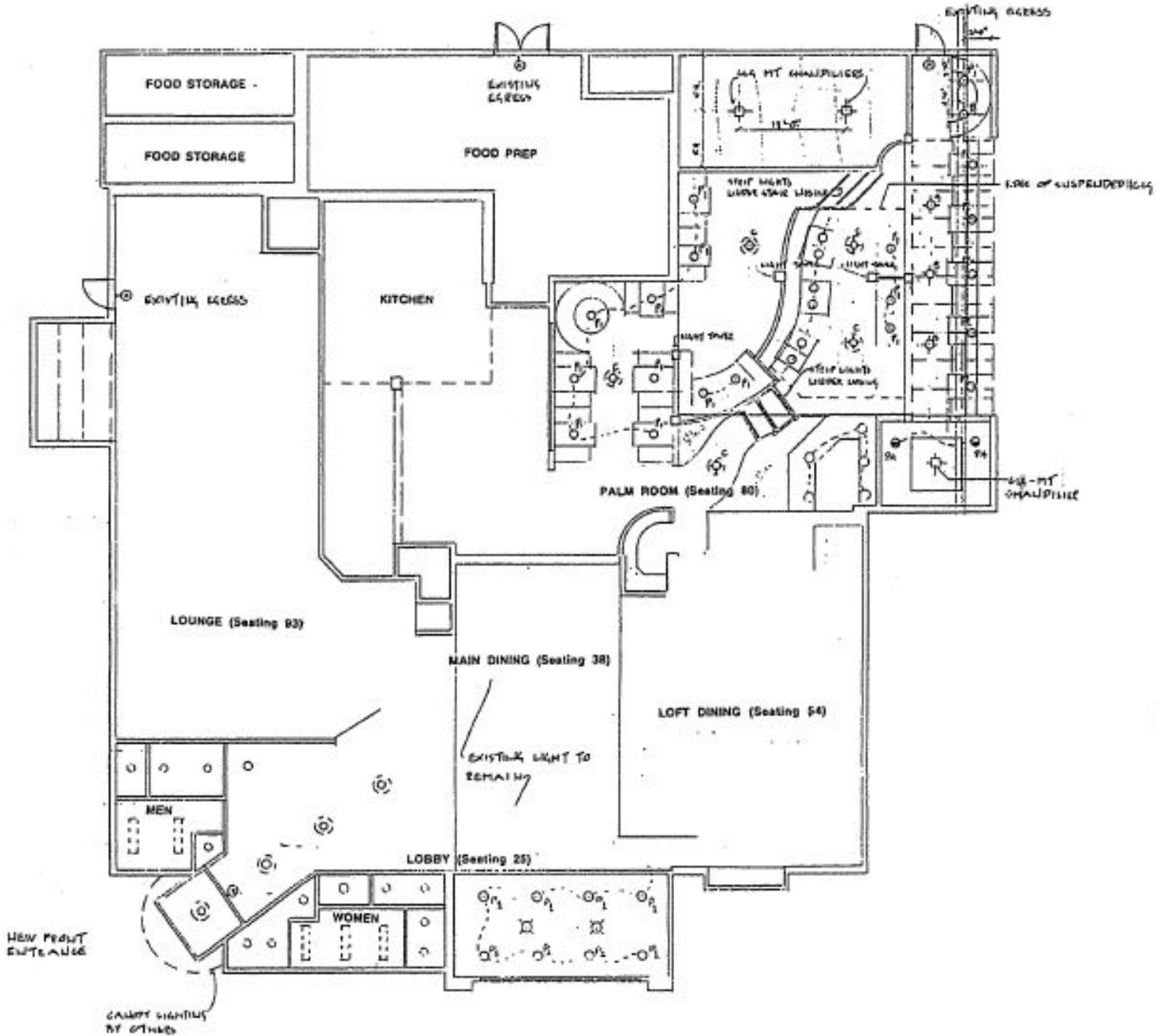
Jim Bartholomew | 508-651-9023 | jimb@rwholmes.com

R.W. HOLMES
COMMERCIAL REAL ESTATE

321 Commonwealth Road, Suite 202, Wayland, MA 01778 | Phone (508) 655-5626 www.rwholmes.com

All information furnished regarding property for sale, rental or financing is from sources deemed reliable. No representation is made as to the accuracy thereof and is submitted subject to errors, omissions, change of price, rental or other conditions, prior sale, lease or financing, or withdrawal without notice.

Floor Plan



For more information please contact:

Craig Johnston | 508-651-9022 | cjohnston@rwholmes.com

Garry Holmes | 508-651-9020 | gholmes@rwholmes.com

Jim Bartholomew | 508-651-9023 | jimb@rwholmes.com

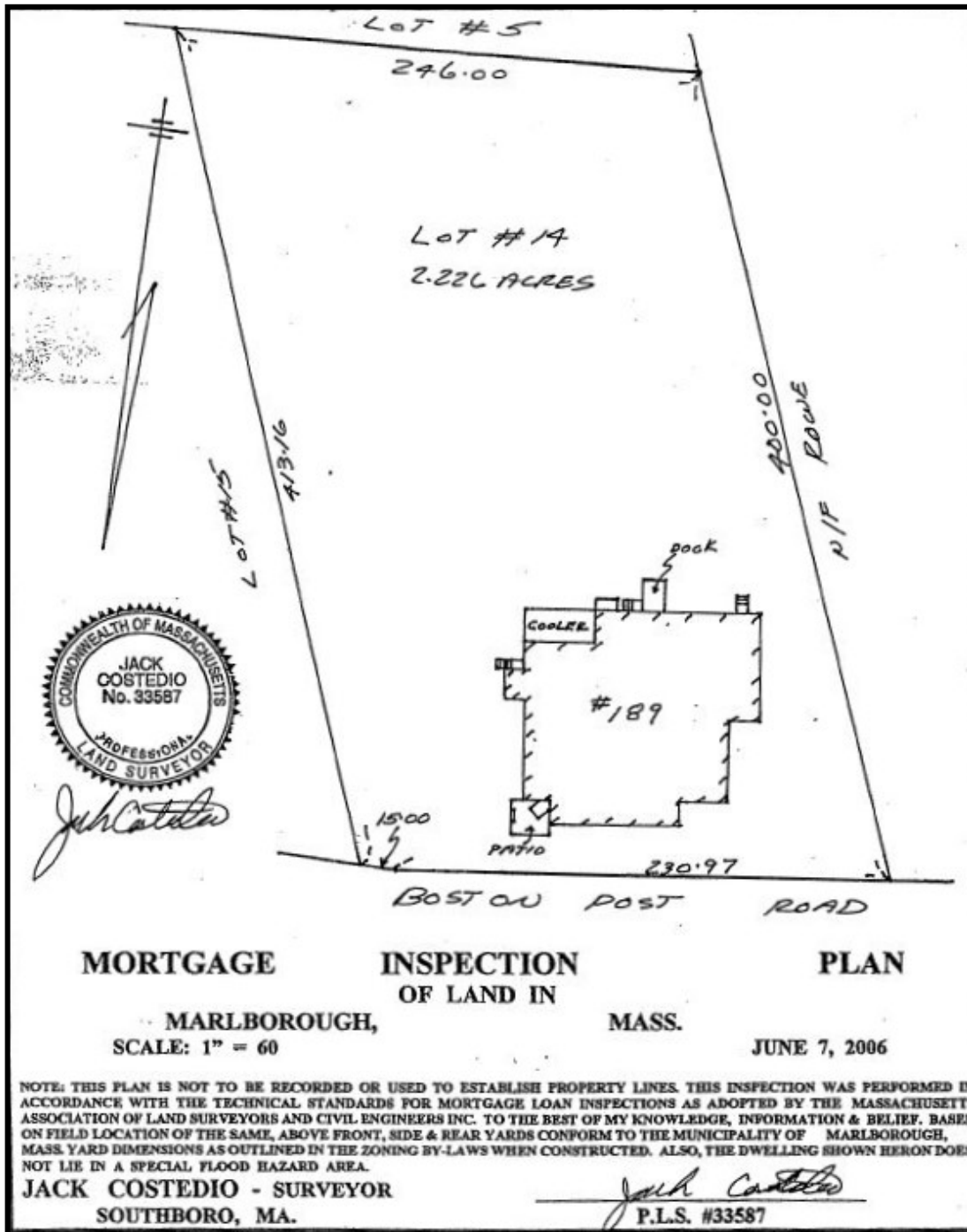


321 Commonwealth Road, Suite 202, Wayland, MA 01778 | Phone (508) 655-5626 www.rwholmes.com

All information furnished regarding property for sale, rental or financing is from sources deemed reliable. No representation is made as to the accuracy thereof and is submitted subject to errors, omissions, change of price, rental or other conditions, prior sale, lease or financing, or withdrawal without notice.

189 Boston Post Road East (Rt 20) | Marlborough, MA

Mortgage Plan



For more information please contact:

Craig Johnston | 508-651-9022 | cjohnston@rwholmes.com

Garry Holmes | 508-651-9020 | gholmes@rwholmes.com

Jim Bartholomew | 508-651-9023 | jimb@rwholmes.com

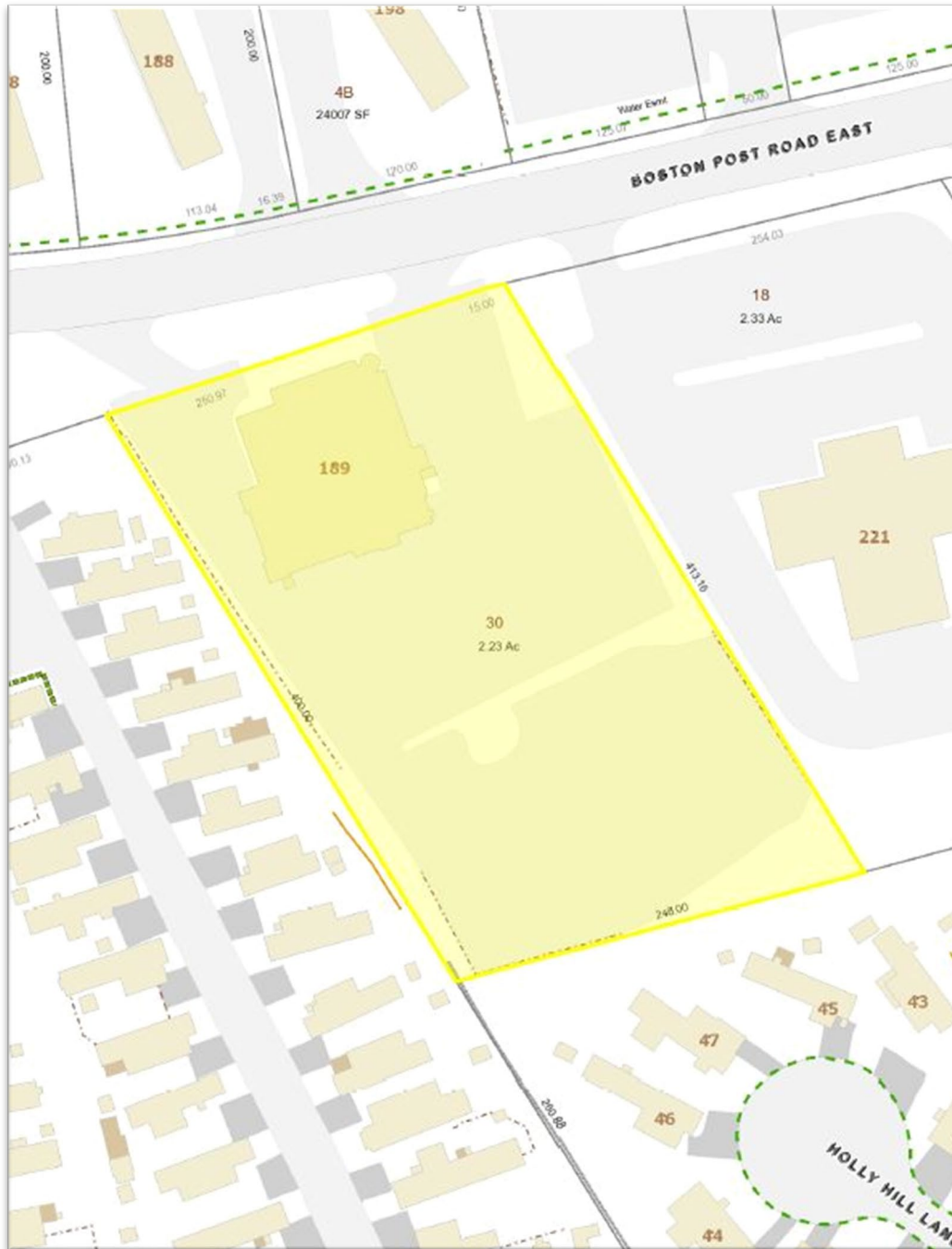
R.W. HOLMES
COMMERCIAL REAL ESTATE

321 Commonwealth Road, Suite 202, Wayland, MA 01778 | Phone (508) 655-5626 www.rwholmes.com

All information furnished regarding property for sale, rental or financing is from sources deemed reliable. No representation is made as to the accuracy thereof and is submitted subject to errors, omissions, change of price, rental or other conditions, prior sale, lease or financing, or withdrawal without notice.

189 Boston Post Road East (Rt 20) | Marlborough, MA

Site Plan



For more information please contact:

Craig Johnston | 508-651-9022 | cjohnston@rwholmes.com

Garry Holmes | 508-651-9020 | gholmes@rwholmes.com

Jim Bartholomew | 508-651-9023 | jimb@rwholmes.com

R.W. HOLMES
COMMERCIAL REAL ESTATE

321 Commonwealth Road, Suite 202, Wayland, MA 01778 | Phone (508) 655-5626 www.rwholmes.com

All information furnished regarding property for sale, rental or financing is from sources deemed reliable. No representation is made as to the accuracy thereof and is submitted subject to errors, omissions, change of price, rental or other conditions, prior sale, lease or financing, or withdrawal without notice.